

MYP4 Drama

# Unit 1: Puppets

A World Theatre unit



**Statement of Inquiry:** Puppets transcend boundaries of communication and expression across time, space and place.

**Global Context:** Personal and cultural expression

**Key Concept:** Communication

**Inquiry Questions:** What are some of the conventions of world puppet traditions such as Wayang Kulit and Bunraku? What can Puppets communicate that humans can't? Why has puppetry endured for so many thousands of years?

**Recap:**

**30 minutes:** Last lesson you made your own Wayang Kulit puppets and performed an extract from the Ramayana. Today you are going to spend the first half of the lesson working on the first Summative assessment - the research presentation. This is due the week after the holidays.

[https://docs.google.com/document/d/18\\_-1\\_GEq9l9Px1Go5yJFjofWF2\\_xuA\\_kCi2dL6JyBRk/edit?usp=sharing](https://docs.google.com/document/d/18_-1_GEq9l9Px1Go5yJFjofWF2_xuA_kCi2dL6JyBRk/edit?usp=sharing)

## 20 minutes: Politics, Puppets and Humour

As well as recounting religious stories/morality tales/providing entertainment, puppets have also traditionally been used to poke fun at religion, governments and individuals. Why might this be?

**On the spot research** - In small groups complete some quick research into either A or B. WHY are these puppet forms sometimes controversial? Compare and contrast the two for similarities and differences. Each group will present a quick summary of findings to the class, with images and key points.

### A - Punch and Judy (UK)

[http://thepjf.com/history\\_of\\_punch\\_and\\_judy.html](http://thepjf.com/history_of_punch_and_judy.html)

<http://www.smithsonianmag.com/arts-culture/are-punch-and-judy-shows-finally-outdated-10599519/?no-ist>

<http://www.vam.ac.uk/content/articles/h/history-of-puppetry-in-britain/>

### B - Spitting Image (UK)

[http://spittingimage.wikia.com/wiki/Spitting\\_Image](http://spittingimage.wikia.com/wiki/Spitting_Image)

<https://francesays.com/2014/05/22/the-world-according-to-les-guignols/>



40 mins: Larger than Life!

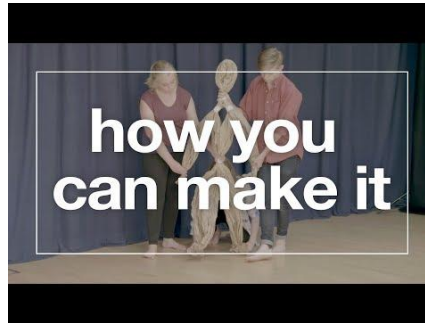
Puppets can also be seen in the West End, on Broadway and in many other theatre shows. Two of the most famous are Warhorse and the Lion King, but there are plenty of other shows like Shrek the Musical that incorporate puppets



# Making your own larger than life puppets

If there is time today you can begin working on making and operating your own larger than life puppets. Try and incorporate what you have learned from the videos on puppets that you have just watched..

If there is time today you can move on to the next slide, if not we will continue next lesson.



These Gyre and Gimble (theatre company) videos are very inspired by [Bunraku](#), a form of Japanese puppetry, especially the way in which the three Bunraku puppeteers operate just one puppet.

‘If these three puppeteers do not all work together in perfect harmony, the puppet’s motions will seem unnatural and fall apart, and thus the doll will never seem to come to life. The left hand of the head puppeteer, which supports the weight of the heavy doll, is like the puppet’s spine, and it is through his left hand that the breath of life is first breathed into the puppet.’

<http://www2.ntj.jac.go.jp/unesco/bunraku/en/contents/creaters/operator.html>



30-45 minutes: Watch the three videos, and then make two large paper puppets as a group. Create a short scene where these two puppets meet and interact in some way (e.g. have an argument, or threaten to leave, or asks on a date etc) whilst waiting for a bus. At least two people should operate one puppet.